

# New!

Certified  
product



# SSQ

Modular changeover  
switches SSQ I-0-II  
(network - generator)

f @ in v  
/etipolam

**ETI**  
SWITCH TO  
A SAFE FUTURE

# Modular changeover switches SSQ I-O-II (network-generator) from 25A up to 40A

## Application

Modular changeover switches SSQ I-O-II (network - generator) enable simple and trouble-free switching of power supply sources in case of emergency (e.g. mains voltage failure). They are designed for installation in switchgear equipped with TH35 rails adapted for mounting modular devices. Switches can be sealed for the selected positions: I or II.

## Technical features

- Mounting on DIN rail,
- One module width - 18 mm,
- Real identification of the contact position on the changeover switch lever I or O or II.



SSQ 125



SSQ 240



SSQ 340



SSQ 440

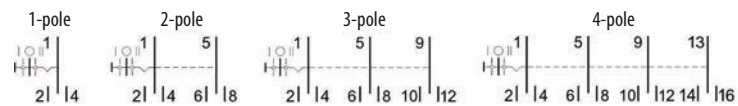
## Technical data

Rated voltage $U_n$	230/400 V AC
Rated current $I_n$	25 A, 40 A
Rated frequency $f_n$	50/60 Hz
Terminals	1,5 - 10 mm <sup>2</sup> „stranded wire“ / 1,5 - 16 mm <sup>2</sup> „wire“, max 1,2 Nm, PZ1
Rated impulse withstand voltage $U_{imp}$	6 kV
Rated short-circuit making capacity $I_{cm}$	1,8 kA
Pollution degree	3
Degree of protection	IP20
Standard	PN-IEC 60947-3
Device width	18 mm
Mounting position	any

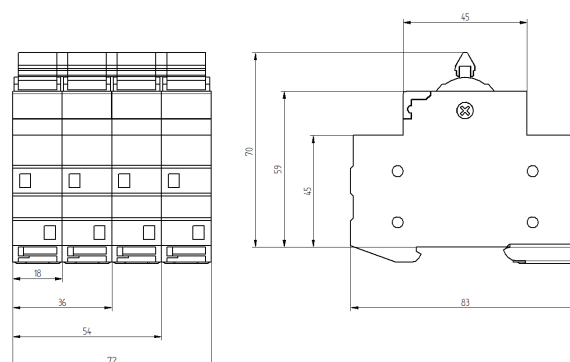
## Three-position modular changeover switch I-O-II up to 40 A

Type	Code No.	$I_n$ (A)	Number of poles	Utilization category	9	(pcs)
SSQ 125	002421414	25	1	AC-22B	88	1/12
SSQ 225	002421424	25	2	AC-22B	176	1/6
SSQ 325	002421434	25	3	AC-22B	264	1/4
SSQ 425	002421444	25	4	AC-22B	352	1/3
SSQ 140	002421415	40	1	AC-22B	88	1/12
SSQ 240	002421425	40	2	AC-22B	176	1/6
SSQ 340	002421435	40	3	AC-22B	264	1/4
SSQ 440	002421445	40	4	AC-22B	352	1/3

## Connecting diagrams



## Dimensions



# Modular changeover switches SSQ I-0-II (network-generator) from 63A up to 125A

## Application

Modular changeover switches SSQ I-0-II (network - generator) up to 125 A for industrial applications enable simple and trouble-free switching of power supply sources in case of emergency (e.g. mains voltage failure). They are designed for installation in switchgear equipped with TH35 rails adapted for mounting modular devices. Switches can be sealed for the selected positions: I or II.

## Technical features

- Mounting on DIN rail,
- One module width - 36 mm,
- Real identification of the contact position on the changeover switch lever I or O or II

## Technical data

Rated voltage $U_n$	230/400 V AC
Rated current $I_n$	63 A, 80 A, 100 A, 125 A
Rated frequency $f_n$	50/60 Hz
Terminals	2,5 - 50 mm <sup>2</sup> , max 3,5 Nm, PZ2
Rated impulse withstand voltage $U_{mp}$	6 kV
Rated short-circuit making capacity $I_{cm}$	4 kA
Pollution degree	3
Degree of protection	IP20
Standard	PN-IEC 60947-3
Device width	32 mm
Mounting position	any

## Three-position modular changeover switch I-0-II up to 125 A

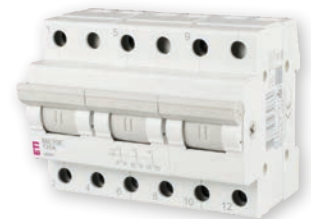
Type	Code No.	$I_n$ (A)	Number of poles	Utilization category	g	pcs
SSQ 163	002421416	63	1	AC-22B	150	1/51
SSQ 263	002421426	63	2	AC-22B	303	1/27
SSQ 363	002421436	63	3	AC-22B	456	1/18
SSQ 463	002421446	63	4	AC-22B	609	1/14
SSQ 180	002421417	80	1	AC-22B	153	1/51
SSQ 280	002421427	80	2	AC-22B	306	1/27
SSQ 380	002421437	80	3	AC-22B	459	1/18
SSQ 480	002421447	80	4	AC-22B	612	1/14
SSQ 1100	002421418	100	1	AC-22B	156	1/51
SSQ 2100	002421428	100	2	AC-22B	312	1/27
SSQ 3100	002421438	100	3	AC-22B	468	1/18
SSQ 4100	002421448	100	4	AC-22B	624	1/14
SSQ 1125	002421419	125	1	AC-22B	161	1/51
SSQ 2125	002421429	125	2	AC-22B	322	1/27
SSQ 3125	002421439	125	3	AC-22B	483	1/18
SSQ 4125	002421449	125	4	AC-22B	644	1/14



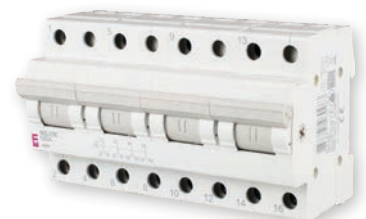
SSQ 1125



SSQ 2125

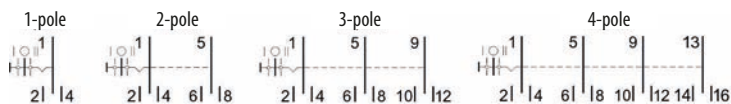


SSQ 3125

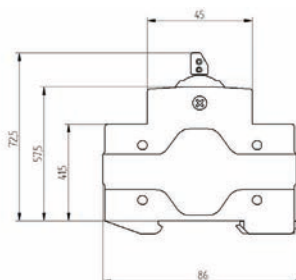
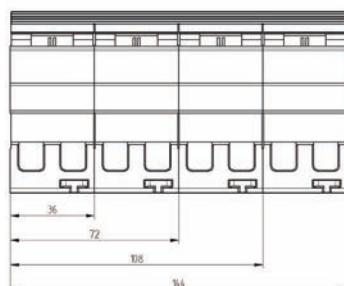


SSQ 4125

## Connecting diagrams



## Dimensions



    /etipolam  
[www.etipolam.com.pl](http://www.etipolam.com.pl)

**ETI Polam Sp. z o.o.**

Ul. Jana Pawła II 18  
06-100 Pułtusk  
Tel. + 48 23 691 93 00  
Faks + 48 23 691 93 60  
Infolinia techniczna - 801 501 571  
[etipolam@etipolam.com.pl](mailto:etipolam@etipolam.com.pl)



**SWITCH TO  
A SAFE FUTURE**