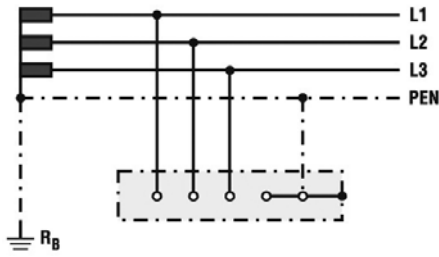
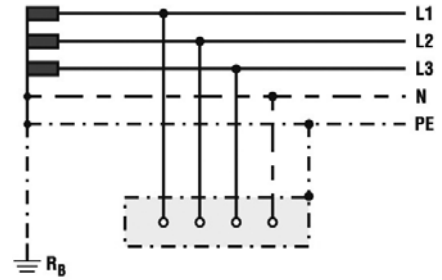


Overvoltage arresters – ETITEC

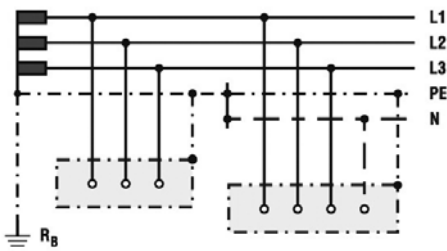
Common power distribution systems (Europe)



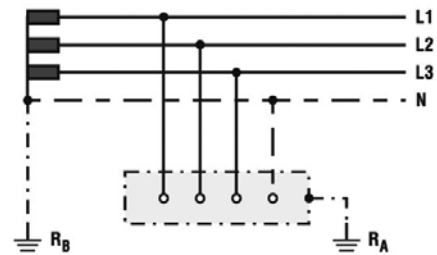
TN-C system



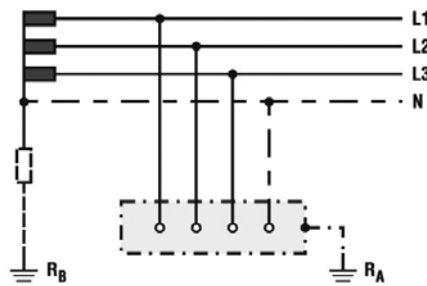
TN-S system



TN-C-S system

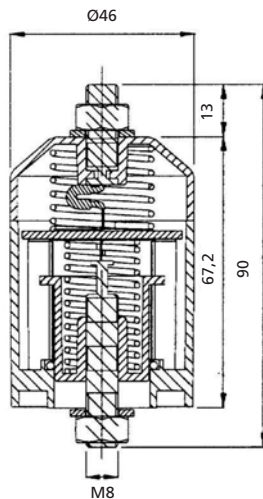


TT system



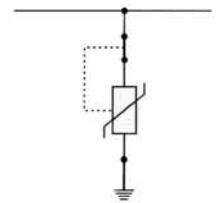
IT system

Overvoltage arresters group A



Technical data ETITEC A

Type	275/10; 275/15	440/10; 440/15
In accordance with	IEC-61643-1	
Category IEC / VDE	II / C	
Max. continuous operating voltage (AC/DC) U_c	280/350 V	440/580 V
Nominal discharge current (8/20) I_n	10 kA; 15 kA	10 kA; 15 kA
Max. discharge current (8/20) I_{max}	20 kA; 30 kA	20 kA; 30 kA
Protection level at I_n (8/20)	1,2 kV	2,2 kV
Response time t_A	<25 ns	
Thermal decoupler	yes	
Torque	max. 3,5 Nm	
Temperature range	-30°C ... + 80°C	
Mounting	outdoors	
Casing material	nylon P66 V-0	



Circuit diagram

Technical data ETITEC AQ		
Type	280/10; 280/15	440/10; 440/15
In accordance with	IEC-61643-11	
Category IEC / VDE	II/C	
Max. continuous operating voltage (AC/DC) U_c	280/350 V	440/580 V
Nominal discharge current (8/20) I_n	10 kA; 15 kA	10 kA; 15 kA
Max. discharge current (8/20) I_{max}	25 kA; 30 kA	25 kA; 30 kA
Protection level Up - at In (8/20)	1.2, 1.3 kV	1.6, 1.8 kV
Follow current I_f	no	
Response time t_A	< 25 ns	
Residual current at U_c IPE	< 2 mA	
Thermal decoupler	yes	
Torque	max. 3.5 Nm	
Short-circuit withstand	25kA / 50 Hz	
Temperature range	- 40°C... +80°C	
Cross-section of connection wire	L/N	M8
	PE	multi-strand 6 mm
Mounting	outdoors	
Casing material	thermoplastic; extinguishing degree UL 94 V-0	

